



The Power of Being There™

CCM850, CCM1650 and CCM4850

The Solution for Secure Console Management

CCM APPLIANCE BENEFITS

- **Be Organized***. Included with all CCM appliances, the Avocent AVWorks® cross-platform management application offers search, sort, and folder options that enable you to organize devices for quick and secure access.
- **Tighten Security**. An onboard SSH v2 server offers secure sessions and tunneling to permit secure console access over public networks.
- **Manage Users***. Four RADIUS and local authentication modes allow you to take advantage of existing user accounts or quickly establish CCM-based accounts. Multiple permission levels allow you to grant or restrict access to specific operations and business critical devices.
- **Be Proactive**. Use SNMP traps to indicate events such as detection of particular text strings or failed authentication. Never miss an important console message using the CCM console manager's offline history buffers and NFS client.
- **Pull it All Together**. The Avocent management software and the CCM appliances combine with Avocent KVM over IP switches and power control, become the industry's most comprehensive data center management solution.

***Coming Soon:** DSView® 3 management software with LDAP, Active Directory, and NT Domains support to help manage users.

Secure and reliable access to serial console ports of data center devices such as servers, routers and network hubs.

As data centers become increasingly distributed, the need to securely manage network devices and servers becomes a top priority. Avocent CCM console management appliances deliver secure and reliable serial over IP connectivity to diverse serially managed devices such as UNIX/Linux servers, power distribution units, hubs, switches, routers, firewalls, and load balancers.

The Avocent CCM console manager provides secure in-band and out-of-band connectivity modes to ensure quick access to critical devices whether the network is up or down. Console management features such as share mode, encryption, offline history buffering, hardware break suppression, and power management distinguish the CCM appliance from simplistic terminal servers.

Whether you are local or remote, the CCM appliance and the easy to use cross-platform management application give you the tools to take command of your data center. Blending seamlessly into your existing network, the CCM appliance may be accessed using the Avocent management application, which includes a cross-platform Telnet and SSH client. The CCM appliances are equally compatible with industry standard Telnet and SSH clients. The CCM appliance SNMP MIB2 and enterprise traps integrate directly with existing SNMP management systems allowing for proactive monitoring.



The CCM console management solution provides administrators with virtual crash cart access needed to keep today's mission critical data centers running smoothly.

MECHANICAL

CCM850 / CCM16550

- **Height** - 1.75" (4.45 cm)
- **Depth** - 8.00" (20.32 cm)
- **Width** - 8.75" (22.23 cm)
- **Weight** - 5.00 lbs. (2.30 kg)
- **Style** - Rackmount

CCM4850

- **Height** - 1.75" (4.45 cm)
- **Depth** - 8.00" (20.32 cm)
- **Width** - 17.50" (22.23 cm)
- **Weight** - 7.00 lbs. (3.20 kg)
- **Style** - Rackmount

ENVIRONMENTAL / POWER / HARDWARE

- **Operating Temperature** - 32° (0°C) to 104° (40°C) for 8 and 16-port models; 32° (0°C) to 131° (55°C) for 48-port model
- **Humidity** - 10 to 90%, non-condensing
- **Power** - 50 to 60 Hz, 0.5 A for 8 and 16-port models; 50 to 60 Hz, 1 A for 48-port model
- **Input Power** - 45 W maximum for 8 and 16-port models; 90 W maximum for 48-port model
- **Operating Voltage** - 90 to 267 VAC for 8 and 16-port models; 100 to 240 VAC for 48-port model
- **Modem Control** - Full
- **Network Connectivity** - 10/100-BaseTX, autosense for 8 and 16-port models; 10 /100/1000-BaseTX, autosense for 48-port model
- **Serial Ports** - 8, 16 or 48 RJ-45 Sun Break Safe

STANDARDS

- **Approved Agency**
FCC P. 15 Class A, ICES-003, EN 55022: 1998 Class A, EN 61000-3-3, AS/NZS CISPR 22, CNS 13438 - Issued: 1997/01/01, VCCI V-3/02.04 Class A, EN 55024-1998, ANSI/UL 60950-1, CSA C22.2 No. 60950-1-CAN/CSA (UL cUL Listed), IEC 60950-1 (2001-10), CENELEC EN 60950-1

WARRANTY

- Two Year

ORDERING DETAILS

- CCM850-001 8-port console manager
- CCM1650-001 16-port console manager
- CCM4850-001 48-port console manager

• **Serial Reversing Cables and Modular Adapters**

- 210090 RJ-45 to DB-25 Male adapter, DTE
- 210091 RJ-45 to DB-25 Female adapter, DTE
- 210092 RJ-45 to DB-25 Male adapter, DCE
- 210093 RJ-45 to DB-25 Female adapter, DCE
- 210094 RJ-45 to DB-9 Male adapter, DTE
- 210095 RJ-45 to DB-9 Female adapter, DCE
- 210105 RJ-45 to Cisco Male adapter for Cisco and Sun Netra console port 210105
- 750122 Wiring Starter Kit (8-wire)

- 690226 10-foot, reversing cable (8-wire)
- 690227 25-foot, reversing cable (8-wire)
- 690228 75-foot, reversing cable (8-wire)

• **Modular Adapters for CAT5 Cables**

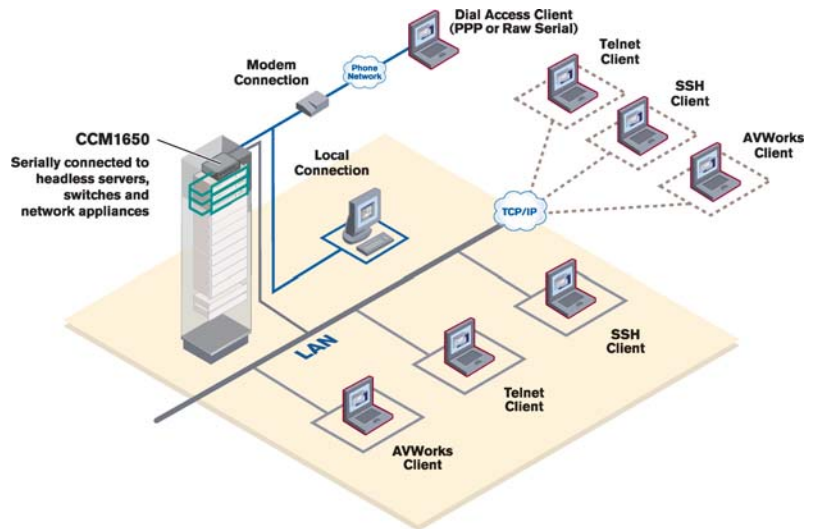
- 210120 RJ-45 to DB-9 Female adapter, DCE
- 210121 RJ-45 to DB-25 Female adapter, DCE
- 210122 RJ-45 to DB-9 Male adapter, DTE
- 210123 RJ-45 to DB-25 Male adapter, DCE
- 210124 CAT5, RJ-45 to DB-25 Male adapter, DTE
- 210125 CAT5, RJ-45 to DB-25 Female adapter, DTE
- 210127 CAT5, RJ-45 to RJ45 Cisco Male adapter for Cisco and Sun Netra console port
- 750238 CAT 5 Serial Starter Kit

Note: For cable lengths greater than 100 feet, use serial reversing cables and adapters rather than CAT5 cables and adapters.

A COMPLETE CONSOLE MANAGEMENT SOLUTION

- **Management Software** - Ease of install/config/session launching; custom folders/names/sites/locations; custom macros; credential caching; session settings such as emulation modes, logging, and screen color
- **History Mode** - 64K offline buffers per port; NFS for server-based file storage (with timestamps); and string search
- **Collaboration** - Share mode
- **Enterprise Traps** - Login/out; device power fail; port alert; user lockout, and many more
- **Key Protocols** - SSHv2, Telnet, PPP, BootP, SNMP, NFS, NTP, and RADIUS
- **Out-of-band Connectivity** - Modem string handling; dedicated console port; PPP and raw serial; and modem sharing
- **Security** - RSA key-based authentication, user lockout, username/password, login traps, 3 levels of accounts, and port-specific rights
- **Authentication Modes*** - Internal (64 accounts) and RADIUS

* **Coming soon:** More authentication modes with DSView 3 software: Internal, Active Directory, LDAP, and NT Domain



The CCM console manager provides reliable in-band and out-of-band console port management. It provides a comprehensive solution that integrates KVM and power management.